



North America and South America are 2 of our world continents.

Let's Race Across the World

Click on the squares for the video

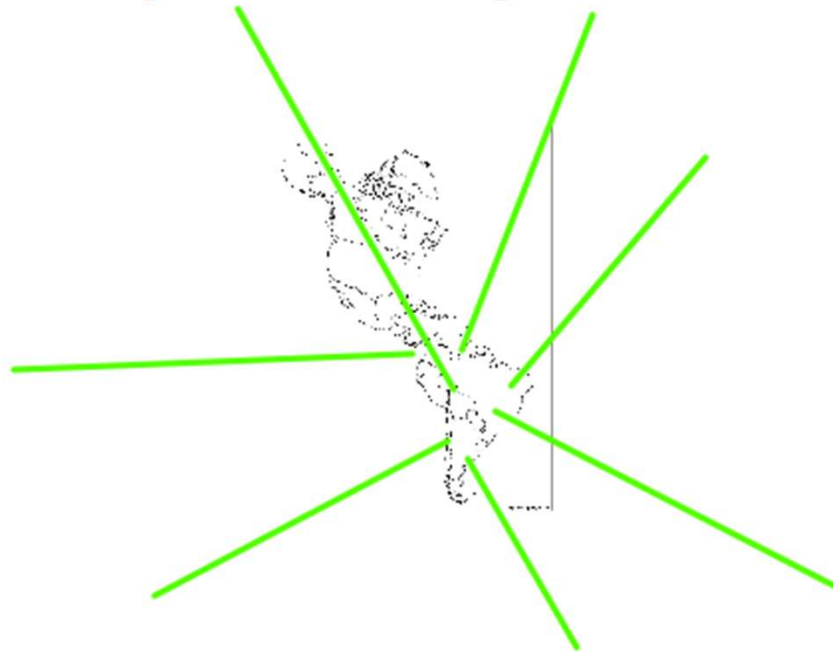


(only until 2mins)



Today we are going to join the 'Race Across The World.'
Stick this in the middle of a double page as you will need to annotate as we travel
across Southern America.

This is what it will begin to look like as we go on our 'Race across the world.'





Locate Mexico City on your map as our starting point.

Draw 3 things that would definitely be packed in your 'Race Across the World' backpack.

Some of Miss Bristow's are:



- Watch the Desert Video on the Merdon VRC



Tatacoa Desert, Colombia



Using google maps/google earth find out specifically where it is located

TASK:

Locate the country and feature onto your map

Locate the bordering/surrounding countries and add on the equator

- Watch the Rainbow Mountain video on the Merdon VRC



Rainbow Mountains, Andes, Peru

Using google maps/google earth find out specifically where it is located

TASK:

Locate country and feature onto your map

Draw this wonder of the world.

Vinicunca, or Winikunka, also called **Montaña de Siete Colores**, **Montaña de Colores** or **Rainbow Mountain**, is a mountain in the Andes of Peru with an altitude of 5,200 meters above sea level.^{[1][2]}

In the middle of the 2010s, mass tourism became attracted by the mountains' series of stripes of various colors.^[5] This due to its mineralogical composition present on the slopes and summits.^[6] The mountain was covered by glacier caps that have melted recently due to global warming.^[7]



- Watch the Salt Lake video on the Merdon VRC



Salar de Uyuni, Bolivia



Using google maps/google earth find out specifically where it is located

TASK:

Locate the feature and feature onto your map

Stick in the picture around the map.

Write top 3 facts about the Salt Flats.

- Watch the Waterfall video 1 and 2 on the Merdon VRC

- Watch the Ushuaia video on the Merdon VRC



Ushuaia, Argentina



Using google maps/google earth find out specifically where it is located

TASK:

Locate the country and the city of Ushuaia as the finishing point

Why is this significant geographically?

Sporcle

- [North America](#)
- [South America](#)
- [World](#)