

Plants: Lesson 2



Water colours

Spark a conversation with this video showing water being transported through a plant.

- 1.) Look back at your experiment and or watch <https://www.bbc.co.uk/teach/class-clips-video/science-ks1-ks2-ivys-plant-workshop-how-does-water-get-from-the-roots-to-the-leaves/zdtfjhv>
- 2.) Draw a picture of the flower after the experiment.

What has happened?

Why do you think this has happened?

3.) Write a conclusion to explain what has happened and why, using these keywords to help you:

stem

water

food colouring

petals

transport

flower

Put these pictures in order to show the life cycle of a plant:

Note the letters down in order in your book.

A



B



C



D



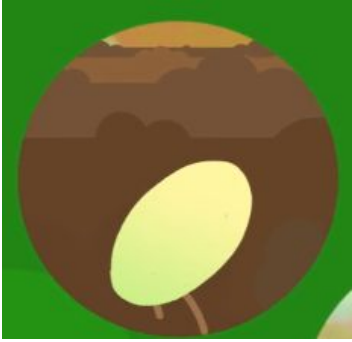
E



Check your answers on the next page.

Answers:

D



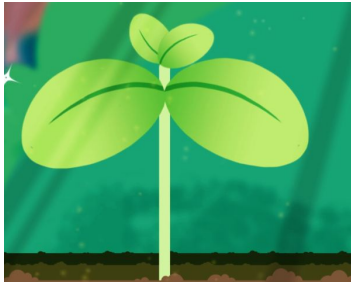
B



E



C



A





Style

Sepal

Stigma

Pollen

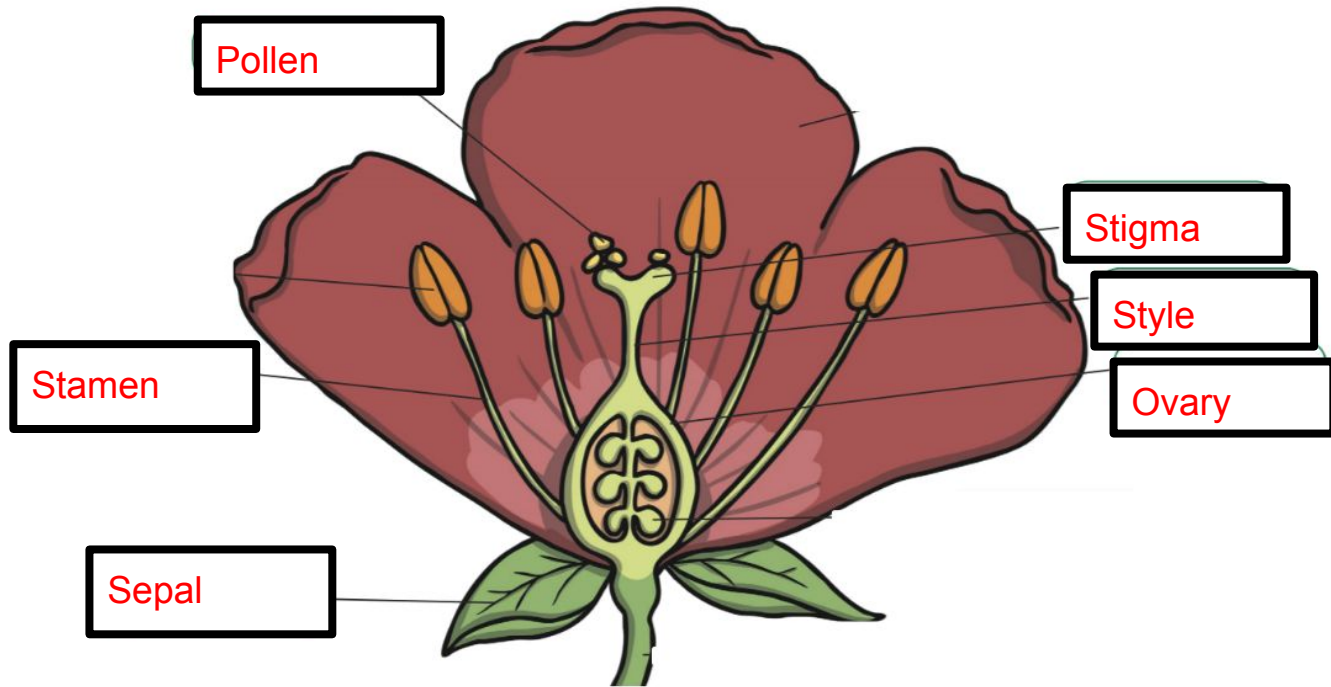
Stamen

Ovary

- 1.) Sketch the flower.
- 2.) Using <https://www.bbc.co.uk/teach/class-clips-video/science-ks1-ks2-ivys-plant-workshop-the-anatomy-of-the-flower/zjmhkmn>

Label the parts of the flower on your diagram.

- 3.) Check your labels using the wagoll on the next page.



Using

<https://www.bbc.co.uk/teach/class-clips-video/science-ks1-ks2-ivys-plant-workshop-the-anatomy-of-the-flower/zjmhkmn>

Can you add the function of each of the parts of the flower to your diagram?

Extension:

Dissect a buttercup or daffodil.

Draw a picture of the flower and label:

- the sepals
- stamen
- Pollen
- stigma
- style
- ovary



Watch:

<https://www.bbc.co.uk/bitesize/topics/zgssgk7/articles/zqbcxfr>

