



Supporting Pupils with Medical Needs Policy

Name of Headteacher:	Claire Martin
Date Policy approved and adopted:	January 2024
Date Due for review:	January 2026

Introduction

This policy meets the requirements under [Section 100 of the Children and Families Act 2014](#), which places a duty on governing boards to make arrangements for supporting pupils at their school with medical conditions.

It is also based on the Department for Education's statutory guidance on [supporting pupils with medical conditions at school](#).

We will endeavour to ensure that children with medical conditions are properly supported so that they have full access to education, including school trips and physical education. The aim is to ensure that all children with medical conditions, in terms of both their physical and mental health, are properly supported in school so that they can play a full and active role in school life, remain healthy and achieve their academic potential.

It is our policy to ensure that all medical information will be treated confidentially by the Headteacher and staff. All administration of medicines is arranged and managed in accordance with the Supporting Pupils with Medical Needs document. All staff have a duty of care to follow and co-operate with the requirements of this policy.

- Where children have a disability, the requirement of the Equality Act 2010 will apply.
- Where children have an identified special **educational** need, the SEN Code of Practice will also apply.

The school recognises that medical conditions may impact social and emotional development as well as having educational implications.

Key Roles & Responsibilities

Statutory Requirement: The governing body should ensure that the school's policy clearly identifies the roles and responsibilities of all those involved in the arrangements they make to support children at school with medical conditions.

The governing board

The governing board has ultimate responsibility to make arrangements to support pupils with medical conditions. The governing board will ensure that sufficient staff have received suitable training and are competent before they are responsible for supporting children with medical conditions.

The Headteacher

The Headteacher will:

- Make sure all staff are aware of this policy and understand their role in its implementation
- Ensure that there is a sufficient number of trained staff available to implement this policy and deliver against all individual healthcare plans (IHCPs), including in contingency and emergency situations
- Ensure that all staff who need to know are aware of a child's condition

- Take overall responsibility for the development of IHCPs
- Make sure that school staff are appropriately insured and aware that they are insured to support pupils in this way
- Contact the school nursing service in the case of any pupil who has a medical condition that may require support at school, but who has not yet been brought to the attention of the school nurse
- Ensure that systems are in place for obtaining information about a child's medical needs and that this information is kept up to date

Staff

Supporting pupils with medical conditions during school hours is not the sole responsibility of one person. Any member of staff may be asked to provide support to pupils with medical conditions, although they will not be required to do so. This includes the administration of medicines.

Those staff who take on the responsibility to support pupils with medical conditions will receive sufficient and suitable training, and will achieve the necessary level of competency before doing so.

Teachers will take into account the needs of pupils with medical conditions that they teach. All staff will know what to do and respond accordingly when they become aware that a pupil with a medical condition needs help.

Parents

Parents will:

- Provide the school with sufficient and up-to-date information about their child's medical needs
- Be involved in the development and review of their child's IHCP and may be involved in its drafting
- Carry out any action they have agreed to as part of the implementation of the IHCP, e.g. provide medicines and equipment, and ensure they or another nominated adult are contactable at all times

Pupils

Pupils with medical conditions will often be best placed to provide information about how their condition affects them. Pupils should be fully involved in discussions about their medical support needs and contribute as much as possible to the development of their IHCPs. They are also expected to comply with their IHCPs.

School nurses and other healthcare professionals

Our school nursing service will notify the school when a pupil has been identified as having a medical condition that will require support in school. This will be before the pupil starts school, wherever possible. They may also support staff to implement a child's IHCP.

Healthcare professionals, such as GPs and pediatricians, will liaise with the school's nurses and notify them of any pupils identified as having a medical condition. They may also provide advice on developing IHCPs.

Local Arrangements

Identifying children with health conditions

Statutory Requirement: The Governing body will ensure that the policy sets out the procedures to be followed whenever a school is notified that a pupil has a medical condition.

Merdon Junior School will aim to identify children with medical needs on entry to the school by working in partnership with parents/ carers and following the process outlined in the document 'Process for identifying children with a health condition' produced by the Southern Health School Nursing Team in conjunction with the Children's Services Health and Safety Team. We will use the 'Health Questionnaire for Schools' to obtain the information required for each child's medical needs to ensure that we have appropriate arrangements in place prior to the child commencing at the school to support them accordingly.

Where a formal diagnosis is awaited or is unclear, we will plan to implement arrangements to support the child, based on the current evidence available for their condition. We will ensure that every effort is made to involve some formal medical evidence and consultation with the parents.

Individual health care plans (IHCPs)

Statutory Requirement: The Governing body will ensure that the school's policy covers the role of individual healthcare plans, and who is responsible for their development in supporting children at school with medical conditions.

We recognise that Individual Healthcare Plans are recommended in particular where conditions fluctuate or where there is a high risk that emergency intervention will be needed, and are likely to be helpful in the majority of other cases, especially where medical conditions are long term and complex. However, not all children will require one. The school, healthcare professional and parent will agree based on evidence when a healthcare plan would be inappropriate or disproportionate.

The Headteacher/SENCo have the overall responsibility for the development of IHCPs for pupils with medical conditions. This has been delegated to Louise Blake – SENCo and Inclusion Leader.

Plans will be reviewed at least annually, or earlier if there is evidence that the pupil's needs have changed.

Plans will be developed with the pupil's best interests in mind and will set out:

- What needs to be done
- When
- By whom

Where children require an individual healthcare plan it will be the responsibility of the SENCo and Senior Administration Officer (dependant on the child's needs) to work with parents and relevant healthcare professionals to write the plan.

A healthcare plan (and its review) may be initiated in consultation with the parent/carer, by a member of school staff or by a healthcare professional involved in providing care to the child. The SENCo and Senior Administration Officer will work in partnership with the parents/carer, and a

relevant healthcare professional eg. School, specialist or children's community nurse, who can best advise on the particular needs of the child to draw up and/or review the plan. Where a child has a special educational need identified in a statement or Educational Health Care (EHC) plan, the individual healthcare plan will be linked to or become part of that statement or EHC plan.

The level of detail in the plan will depend on the complexity of the child's condition and how much support is needed. The governing board and the Headteacher/SENCo, will consider the following when deciding what information to record on IHCPs:

- The medical condition, its triggers, signs, symptoms and treatments
- The pupil's resulting needs, including medication (dose, side effects and storage) and other treatments, time, facilities, equipment, testing, access to food and drink where this is used to manage their condition, dietary requirements and environmental issues, e.g. crowded corridors, travel time between lessons
- Specific support for the pupil's educational, social and emotional needs. For example, how absences will be managed, requirements for extra time to complete exams, use of rest periods or additional support in catching up with lessons, counselling sessions
- The level of support needed, including in emergencies. If a pupil is self-managing their medication, this will be clearly stated with appropriate arrangements for monitoring
- Who will provide this support, their training needs, expectations of their role and confirmation of proficiency to provide support for the pupil's medical condition from a healthcare professional, and cover arrangements for when they are unavailable
- Who in the school needs to be aware of the pupil's condition and the support required
- Arrangements for written permission from parents and the Headteacher/SENCo for medication to be administered by a member of staff, or self-administered by the pupil during school hours
- Separate arrangements or procedures required for school trips or other school activities outside of the normal school timetable that will ensure the pupil can participate, e.g. risk assessments
- Where confidentiality issues are raised by the parent/pupil, the designated individuals to be entrusted with information about the pupil's condition
- What to do in an emergency, including who to contact, and contingency arrangements

Statutory Requirement: The governing body should ensure that all plans are reviewed at least annually or earlier if evidence is presented that the child's needs have changed. Plans should be developed with the child's best interests in mind and ensure that the school assesses and manages the risks to the child's education, health and social well-being and minimise disruption.

- The SENCo and Senior Admin Officer will ensure that all plans are reviewed at least annually (or earlier if evidence is presented that the child's needs have changed)

Statutory Requirement: When deciding what information should be recorded on individual healthcare plans, the governing body should consider the following:

- The medical condition, its triggers, signs, symptoms and treatments

- The pupil's resulting needs, including medication (dose, side-effects and storage) and other treatments, time, facilities, equipment, testing, access to food and drink where this is used to manage their condition, dietary requirements and environmental issues eg crowded corridors, travel time between lessons
- Specific support for the pupil's educational, social and emotional needs – for example, how absences will be managed, requirements for extra time to complete exams, use of rest periods or additional support in catching up with lessons, counselling sessions
- The level of support needed (some children will be able to take responsibility for their own health needs) including in emergencies. If a child is self-managing their medication, this should be clearly stated, with appropriate arrangements for monitoring who will provide this support, their training needs, expectations of their role and confirmation of proficiency to provide support for the child's medical condition from a healthcare professional. Also, cover arrangements for when they are unavailable; who in the school needs to be aware of the child's condition and the support required; arrangements for written permission from parents and the Headteacher for medication to be administered by a member of staff, or self-administered by the pupil during school hours; separate arrangements or procedures required for school trips or other school activities outside of the normal school timetable that will ensure the child can participate, e.g. risk assessments; where confidentiality issues are raised by the parent/child, the designated individuals to be entrusted with information about the child's condition; and what to do in an emergency, including whom to contact, and contingency arrangements. Some children may have an emergency healthcare plan prepared by their lead clinician that could be used to inform development of their individual healthcare plan.

Emergency Procedures

Statutory Requirement: The Governing body will ensure that the school's policy sets out what should happen in an emergency situation.

Where a child has an individual healthcare plan, this will clearly define what constitutes an emergency and provide a process to follow. All relevant staff will be made aware of the emergency symptoms and procedures. We will ensure other children in the school know what to do in the event of an emergency i.e. informing a teacher immediately if they are concerned about the health of another child.

Where a child is required to be taken to hospital, a member of staff will stay with the child until their parents arrives, this includes accompanying them to hospital by ambulance if necessary (taking any relevant medical information, care plans etc. that the school holds).

Roles

Staff training

Statutory Requirement: The Governing Body should ensure that this policy clearly sets out how staff will be supported in carrying out their role to support children with medical conditions, and how this will be reviewed. It should specify how training needs will be assessed and by whom training will be commissioned and provided.

The school policy should be clear that any member of school staff providing support to a child with medical needs should have received suitable training.

Staff must not administer prescription medicines or undertake any health care procedures without the appropriate training (updated to reflect any individual healthcare plans)

Training will:

- Be sufficient to ensure that staff are competent and have confidence in their ability to support the pupils
- Fulfil the requirements in the IHCPs
- Help staff to have an understanding of the specific medical conditions they are being asked to deal with, their implications and preventative measures

Healthcare professionals will provide confirmation of the proficiency of staff in a medical procedure, or in providing medication.

All staff will receive training so that they are aware of this policy and understand their role in implementing it, for example, with preventative and emergency measures so they can recognise and act quickly when a problem occurs. This will be provided for new staff during their induction.

All new staff will be inducted on the policy when they join the school through their starting induction meeting. Records of this training will be stored in the training record.

All nominated staff will be provided awareness training on the school's policy for supporting children with medical conditions which will include what their role is in implementing the policy. This training will be carried out following a review of the policy.

The awareness training will be provided to staff by the trained member of staff.

We will retain evidence that staff have been provided the relevant awareness training on the policy by minutes of meetings/signature sheets.

Where required we will work with the relevant healthcare professionals to identify and agree the type and level of training required and identify where the training can be obtained from. This will include ensuring that the training is sufficient to ensure staff are competent and confident in their ability to support children with medical conditions. The training will include preventative and emergency measures so that staff can recognise and act quickly when a problem occurs and therefore allow them to fulfil the requirements set out in the individual healthcare plan.

Any training undertaken will form part of the overall training plan for the school and refresher awareness training will be scheduled at appropriate intervals agreed with the relevant healthcare professional delivering the training.

A 'Staff training record– administration of medicines' form (Appendix G) will be completed to document the type of awareness training undertaken, the date of training and the competent professional providing the training.

The child's role

Statutory Requirement: The Governing body will ensure that the school's policy covers arrangements for children who are competent to manage their own health needs and medicines.

Where possible and in discussion with parents, children that are competent will be encouraged to take responsibility for managing their own medicines and procedures. This will be recorded in their individual healthcare plan. The healthcare plan will reference what will happen should a child who self-administers refuse to take their medication (this will normally be informing the parent/carer at the earliest opportunity).

Where possible we will endeavour to ensure that children can carry their own medicines and relevant devices or have easy access to allow for quick self-medication. We will agree with relevant healthcare professionals/parent the appropriate level of supervision required and document this in their healthcare plan.

Managing medicines on School Premises

Statutory Requirement: The Governing Body will ensure that the school's policy is clear about the procedures to be followed for managing medicines.

Record keeping

Statutory Requirement: The governing body should ensure that written records are kept of all medicines administered to children.

A record of what has been administered including how much, when and by whom, will be recorded on a 'record of prescribed medicines' form. The form will be kept on file. Any possible side effects of the medication will also be noted and reported to the parent/carers.

The governing board will ensure that written records are kept of all medicine administered to pupils for as long as these pupils are at the school. Parents will be informed if their pupil has been unwell at school. IHCPs are kept in a readily accessible place which all staff are aware of. These are located in the School Office.

The administration of medicines is the overall responsibility of the parents/carers. Where clinically possible we will encourage parents to ask for medicines to be prescribed in dose frequencies which enable them to be taken outside of school hours. However, the Headteacher is responsible for ensuring children are supported with their medical needs whilst on site, therefore this may include managing medicines where it would be detrimental to a child's health or school attendance not to do so.

We will not give prescription or non-prescription medicines to a child under 16 without their parent's/carers written consent (a 'parental agreement for setting to administer medicines' form will be used to record this, Appendix D), except in exceptional circumstances where the medicine has been prescribed to the child without the knowledge of the parents. In such cases, we will make every effort to encourage the child or young person to involve their parents while respecting their right to confidentiality.

The name of the child, dose, expiry and shelf life dates will be checked before medicines are administered.

On occasions where a child refuses to take their medication the parents will be informed at the earliest available opportunity.

We will only accept prescribed medicines that are in date, labelled, provided in the original container as dispensed by the pharmacist and include instructions for administration, their dosage and storage. Insulin is the exception, which must still be in date but will generally be available to schools inside an insulin pen or a pump, rather than its original container.

Inhalers will be stored in a safe but readily accessible place (first aid room), and clearly marked with the child's name.

Controlled drugs will be securely stored in a non-portable container which only named staff will have access to. We will ensure that the drugs are easily accessible in an emergency situation. A record will be kept of any doses used and the amount of the controlled drug held in school. There may be instances where it is deemed appropriate for a child to administer their own controlled medication. This would normally be at the advice of a medical practitioner. Where an individual child is competent to do so and following a risk assessment, we may allow them to have prescribed controlled drugs on them with monitoring arrangements in place.

We will only administer non-prescribed medicines on request from the parent if they are in clearly identifiable packaging and only on a short term basis (Where the school have concerns they will seek further guidance from their link School Nurse).

We will never administer aspirin to any child under 16 years old unless prescribed by a doctor.

All other pain relief medicine will not be administered without first checking maximum dosages and when previously taken. We will always inform parents.

Any homeopathic remedies to be administered will require a letter of consent from the child's doctor and will be administered at the discretion of the Headteacher.

Emergency medicines will be stored in a safe location but not locked away to ensure they are easily accessible in the case of an emergency.

Types of emergency medicines include:

- Injections of adrenaline for acute allergic reactions
- Inhalers for asthmatics
- Injections of Glucagon for diabetic hypoglycaemia

Other emergency medication ie. Rectal diazepam or Buccal Midazolam for major seizures will be stored in accordance with the normal prescribed medicines procedures (see storage section, page 10).

Complaints

Parents with a complaint about their child's medical condition should discuss these directly with the Headteacher in the first instance. If the Headteacher cannot resolve the matter, they will direct parents to the school's complaints procedure **outlined in the Complaints Policy**.

Monitoring arrangements

This policy will be reviewed and approved by the governing board every 2 years.

Links to other policies

This policy links to the following policies:

- Accessibility plan
- Complaints
- First aid
- Health and safety
- Safeguarding
- Special educational needs information policy

Storage

All medication other than emergency medication will be stored safely in a locked cabinet, where the hinges cannot be easily tampered with and cannot be easily removed from the premise.

Where medicines need to be refrigerated, they will be stored in the staff room refrigerator in a clearly labelled airtight container. There must be restricted access to a refrigerator holding medicines.

Children will be made aware of where their medicines are at all times and be able to access them immediately where appropriate. Where relevant they should know who holds the key to the storage facility.

Medicines such as asthma inhalers, blood glucose testing meters and adrenaline pens will always be readily available to children and not locked away. We will also ensure that they are readily available when outside of the school premises or on school trips.

Storage of medication whilst off site will be maintained at steady temperature and secure. There will be appropriately trained staff present to administer day to day and emergency medication and copies of individual health care plans will be taken off site to ensure appropriate procedures are followed.

Disposal

It is the responsibility of the parents/carers to dispose of their child's medicines. It is our policy to return any medicines that are no longer required including those where the date has expired to the parents/carers. Parents/carers will be informed of this when the initial agreements are made to administer medicines. Medication returned to parent/ carers will be documented on the tracking medication form.

Sharps boxes will be in place for the disposal of needles. Delivery, collection and disposal of these will be arranged as and when needed.

Medical Accommodation

The First Aid Room will be used for all medical administration/treatment purposes. The location/room will be made available when required.

Day trips/off site activities

Statutory Requirement: The Governing body should ensure that their arrangements are clear and unambiguous about the need to support actively pupils with medical conditions to participate in school trips and visits, or in sporting activities, and not prevent them from doing so.

We will ensure that teachers are aware of how a child's medical condition will impact on their participation in any off site activity or day trip, but we will ensure that there is enough flexibility for all children to participate according to their own abilities within reasonable adjustments.

We will consider what reasonable adjustments we might make to enable children with medical needs to participate fully and safely on visits. We will carry out a risk assessment so that planning arrangements take account of any steps needed to ensure that pupils with medical conditions are included. We will consult with parents and pupils and advice from the relevant healthcare professional to ensure that pupils can participate safely.

Unacceptable practice

Statutory Requirement: The governing body will ensure that the school's policy is explicit about what practice is not acceptable.

Staff are expected to use their discretion and judge each child's individual healthcare plan on its merits, it is not generally acceptable practice to:

- prevent children from easily accessing their inhalers and medication and administering their medication when and where necessary;
- assume that every child with the same condition requires the same treatment;
- ignore the views of the child or their parents; or ignore medical evidence or opinion (although this may be challenged);
- send children with medical conditions home frequently or prevent them from staying for normal school activities, including lunch, unless this is specified in their individual healthcare plans;
- if the child becomes ill, send them to the school office or medical room unaccompanied or with someone unsuitable;
- penalise children for their attendance record if their absences are related to their medical condition, e.g. hospital appointments;
- prevent pupils from drinking, eating or taking toilet or other breaks whenever they need to in order to manage their medical condition effectively;
- require parents, or otherwise make them feel obliged, to attend school to administer medication or provide medical support to their child, including with toileting issues. No parent should have to give up working because the school is failing to support their child's medical needs; or prevent children from participating, or create unnecessary barriers to children participating in any aspect of school life, including school trips eg. by requiring parents to accompany the child.

Liability and Indemnity

Statutory Requirement: The governing body will ensure that the appropriate level of insurance is in place and appropriately reflects the level of risk.

Staff at the school are indemnified under the County Council self-insurance arrangements.

The County Council's is self-insured and have extended this self-insurance to indemnify school staff who have agreed to administer medication or undertake a medical procedure to children. To meet the requirements of the indemnification, we will ensure that staff at the school have parent's permission for administering medicines and members of staff will have had training on the administration of the medication or medical procedure.

Complaints

Statutory Requirement: The governing body will ensure that the school's policy sets out how complaints may be made and will be handled concerning the support provided to pupils with medical conditions.

Should parents or children be dissatisfied with the support provided they can discuss their concerns directly with the Headteacher. If for whatever reason this does not resolve the issue, they may make a formal complaint via the school's complaints procedure.

A check list

At Merdon Junior School, we

- ensure that sufficient staff are suitably trained,
- ensure that all relevant staff will be made aware of the child's condition,
- cover arrangements in case of staff absence or staff turnover to ensure someone is always available,
- provide a briefing for supply teachers,
- complete a risk assessment for school visits, holidays, and other school activities outside of the normal timetable
- monitor individual healthcare plans.

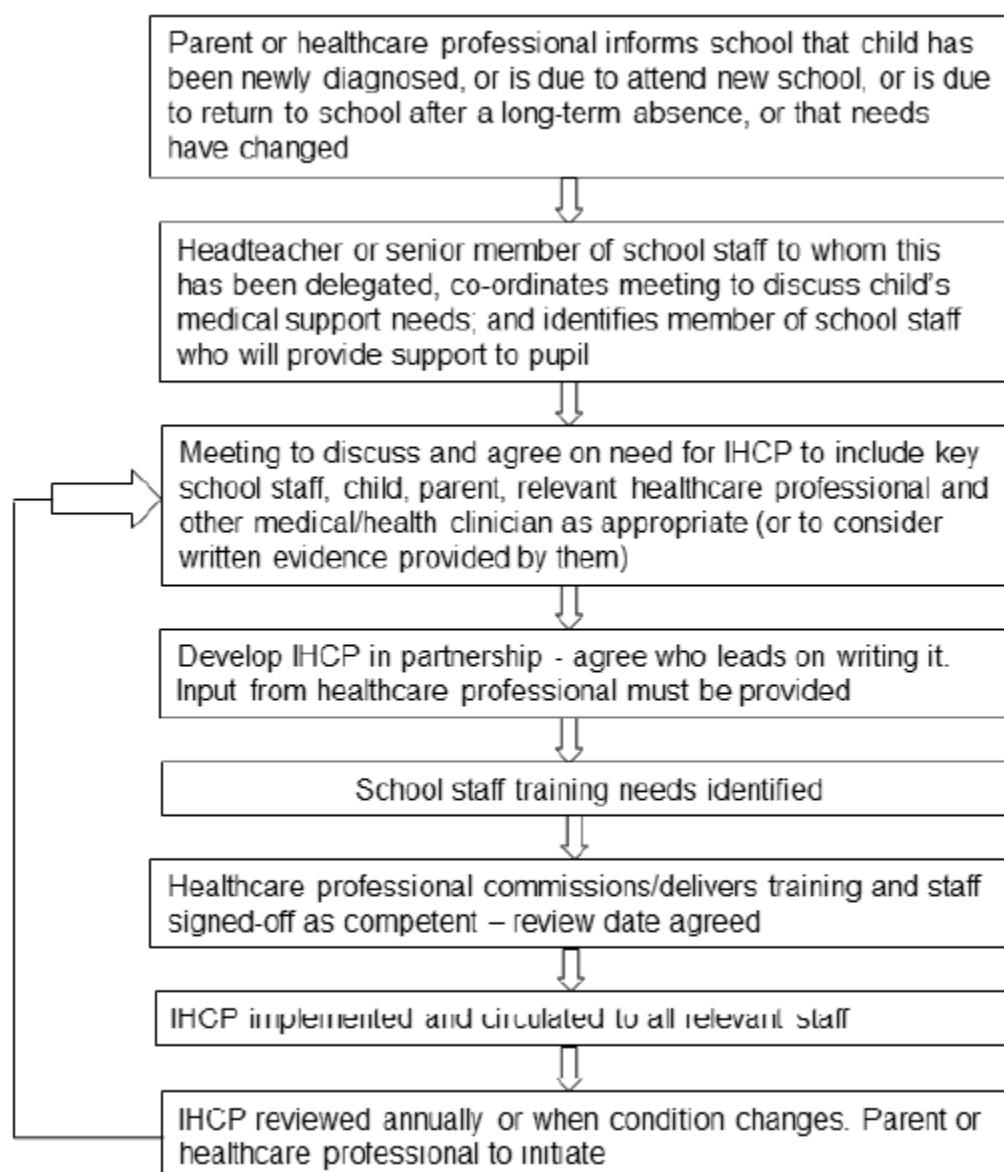


When deciding what information should be recorded on individual healthcare plans, we at Merdon Junior School consider the following:

- the medical condition, its triggers, signs, symptoms and treatments;
- the pupil's resulting needs, including medication (dose, side effects and storage) and other treatments, time, facilities, equipment, testing, access to food and drink where this is used to manage their condition, dietary requirements and environmental issues eg crowded corridors, travel time between lessons;
- specific support for the pupil's educational, social and emotional needs – for example, how absences will be managed, requirements for extra time to complete exams, use of rest periods or additional support in catching up with lessons, counselling sessions;
- the level of support needed (some children will be able to take responsibility for their own health needs) including in emergencies. If a child is self-managing their medication, this should be clearly stated with appropriate arrangements for monitoring;
- who will provide this support, their training needs, expectations of their role and confirmation of proficiency to provide support for the child's medical condition from a healthcare professional; and cover arrangements for when they are unavailable;
- who in the school needs to be aware of the child's condition and the support required;
- arrangements for written permission from parents and the Headteacher for medication to be administered by a member of staff, or self-administered by the pupil during school hours;

- separate arrangements or procedures required for school trips or other school activities outside of the normal school timetable that will ensure the child can participate, eg risk assessments;
- where confidentiality issues are raised by the parent/child, the designated individuals to be entrusted with information about the child's condition; and
- what to do in an emergency, including whom to contact, and contingency arrangements. Some children may have an emergency healthcare plan prepared by their lead clinician that could be used to inform development of their individual healthcare plan.

Process for developing individual healthcare plans





Name of school/setting	
Child's name	
Group/class/form	
Date of birth	
Child's address	
Medical diagnosis or condition	
Date	
Review date	

Family Contact Information

Name	
Phone no. (work)	
(home)	
(mobile)	
Name	
Relationship to child	
Phone no. (work)	
(home)	
(mobile)	

Clinic/Hospital Contact

Name	
Phone no.	

G.P.

Name	
Phone no.	

Who is responsible for providing support in school	
--	--

Describe medical needs and give details of child's symptoms, triggers, signs, treatments, facilities, equipment or devices, environmental issues etc

Name of medication, dose, method of administration, when to be taken, side effects, contra-indications, administered by/self-administered with/without supervision

Daily care requirements

Specific support for the pupil's educational, social and emotional needs

Arrangements for school visits/trips etc

Other information

Describe what constitutes an emergency, and the action to take if this occurs

Who is responsible in an emergency (*state if different for off-site activities?*)

Plan developed with

Staff training needed/undertaken – who, what, when

Form copied to

Parental agreement for setting to administer medicine



The school/setting will not give your child medicine unless you complete and sign this form, and the school or setting has a policy that the staff can administer medicine.

Date for review to be initiated by	
Name of school/setting	Merdon Junior School
Name of child	
Date of birth	
Group/class/form	
Medical condition or illness	

Medicine

Name/type of medicine <i>(as described on the container)</i>	
Expiry date	
Dosage and method	
Timing	
Special precautions/other instructions	
Are there any side effects that the school/setting needs to know about?	
Self-administration – y/n	
Procedures to take in an emergency	

NB: Medicines must be in the original container as dispensed by the pharmacy

Contact Details

Name	
Daytime telephone no.	
Relationship to child	
Address	
I understand that I must deliver the medicine personally to	[agreed member of staff]

The above information is, to the best of my knowledge, accurate at the time of writing and I give consent to school/setting staff administering medicine in accordance with the school/setting policy. I will inform the

school/setting immediately, in writing, if there is any change in dosage or frequency of the medication or if the medicine is stopped.

Signature(s)

Date

Record of medicine administered to an individual child



Name of school/setting	Merdon Junior School
Name of child	
Date medicine provided by parent	
Group/class/form	
Quantity received	
Name and strength of medicine	
Expiry date	
Quantity returned	
Dose and frequency of medicine	

Staff signature _____

Signature of parent _____

Date			
Time given			
Dose given			
Name of member of staff			
Staff initials			

Date			
Time given			
Dose given			
Name of member of staff			
Staff initials			

C: Record of medicine administered to an individual child (Continued)

Date

Time given

Dose given

Name of member of staff

Staff initials

Date

Time given

Dose given

Name of member of staff

Staff initials

Date

Time given

Dose given

Name of member of staff

Staff initials

Date

Time given

Dose given

Name of member of staff

Staff initials

Staff Training Record – Administration of Medicines



Name of school/setting	
Name	
Type of training received	
Date of training completed	
Training provided by	
Profession and title	

I confirm that [name of member of staff] has received the training detailed above and is competent to carry out any necessary treatment. I recommend that the training is updated [name of member of staff].

Trainer's signature _____

Date _____

I confirm that I have received the training detailed above.

Staff signature _____

Date _____

Suggested review date

Contacting emergency services

Appendix H



Request an ambulance - dial 999, ask for an ambulance and be ready with the information below.

Speak clearly and slowly and be ready to repeat information if asked.

1. Your telephone number

02380 265255

2. Your name

3. Your location as follows;

**Merdon Junior School
Merdon Avenue
Chandlers Ford Hampshire
SO53 1EJ**

4. State what the postcode is – please note that postcodes for satellite navigation systems may differ from the postal code

SO53 1EJ

5. Provide the exact location of the patient within the school setting

6. Provide the name of the child and a brief description of their symptoms

7. Inform Ambulance Control of the best entrance to use and state that the crew will be met and taken to the patient

Ensure that the school barrier is open for immediate access

8. Put a completed copy of this form by the phone

Appendix I



Dear Parent

DEVELOPING AN INDIVIDUAL HEALTHCARE PLAN FOR YOUR CHILD

Thank you for informing us of your child's medical condition. I enclose a copy of the school's policy for supporting pupils at school with medical conditions for your information.

A central requirement of the policy is for an individual healthcare plan to be prepared, setting out what support the each pupil needs and how this will be provided. Individual healthcare plans are developed in partnership between the school, parents, pupils, and the relevant healthcare professional who can advise on your child's case. The aim is to ensure that we know how to support your child effectively and to provide clarity about what needs to be done, when and by whom. Although individual healthcare plans are likely to be helpful in the majority of cases, it is possible that not all children will require one. We will need to make judgements about how your child's medical condition impacts on their ability to participate fully in school life, and the level of detail within plans will depend on the complexity of their condition and the degree of support needed.

A meeting to start the process of developing your child's individual health care plan has been scheduled for xx/xx/xx. I hope that this is convenient for you and would be grateful if you could confirm whether you are able to attend. The meeting will involve [the following people]. Please let us know if you would like us to invite another medical practitioner, healthcare professional or specialist and provide any other evidence you would like us to consider at the meeting as soon as possible.

If you are unable to attend, it would be helpful if you could complete the attached individual healthcare plan template and return it, together with any relevant evidence, for consideration at the meeting. I [or another member of staff involved in plan development or pupil support] would be happy for you contact me [them] by email or to speak by phone if this would be helpful.

Yours sincerely